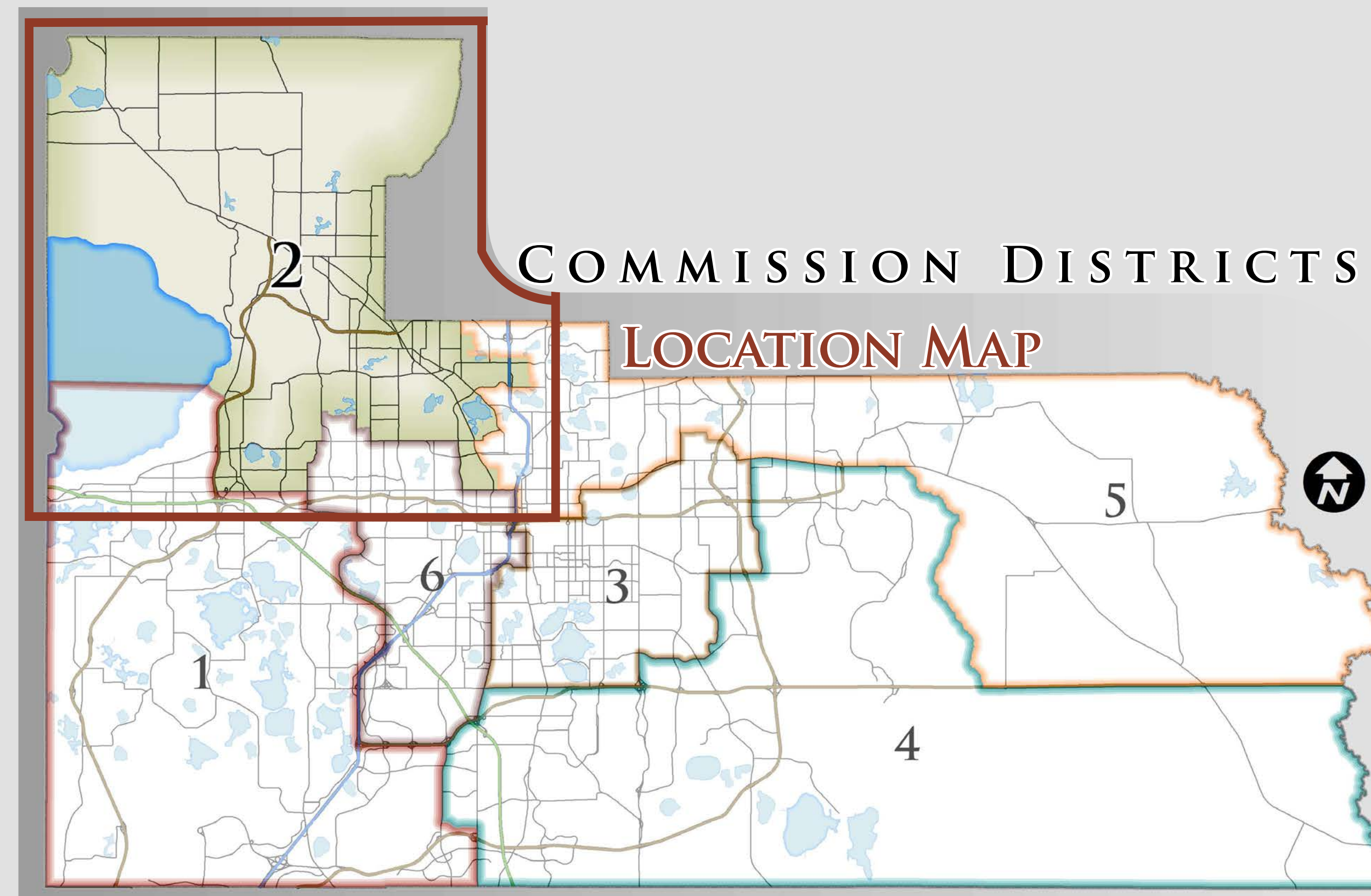
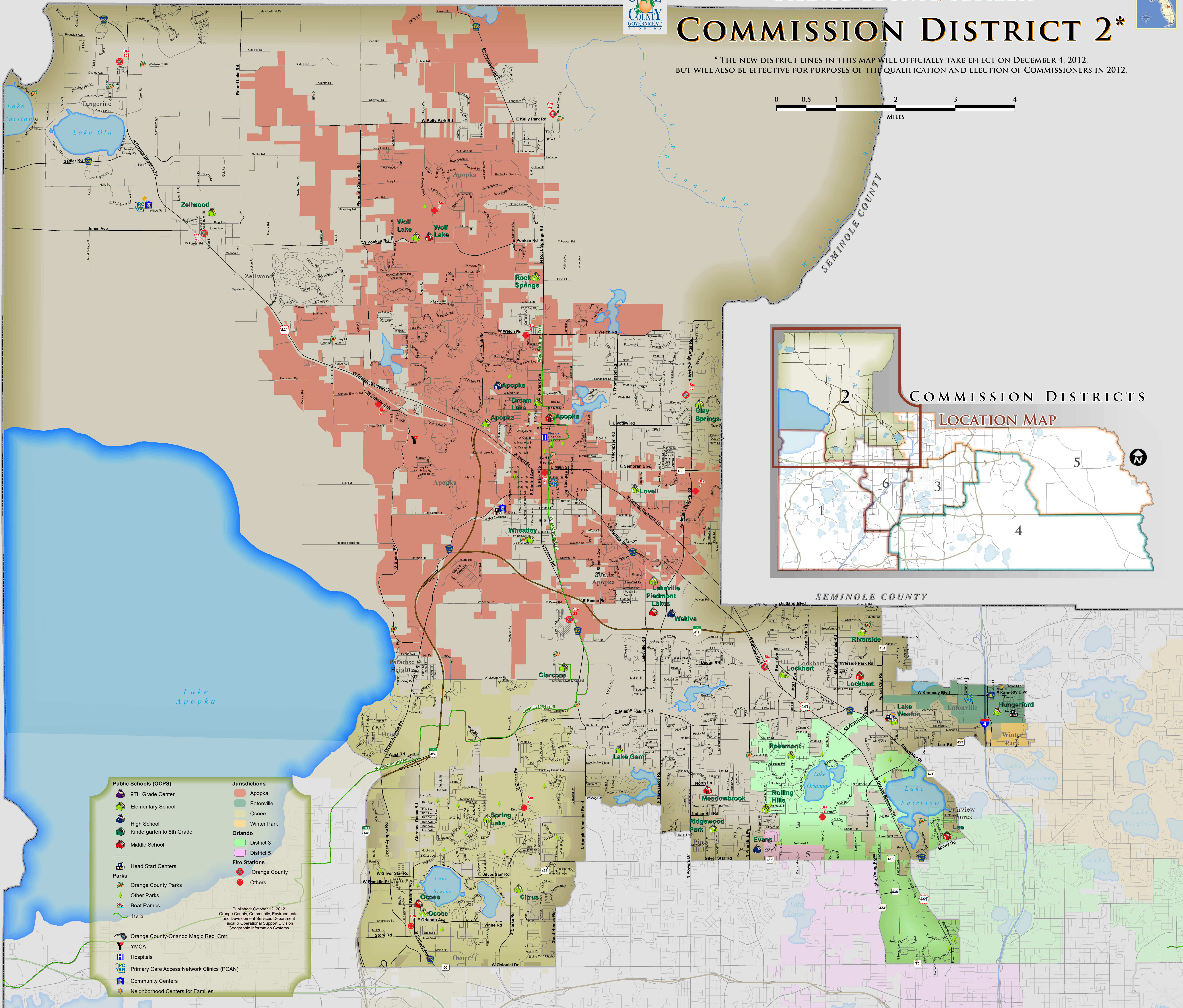
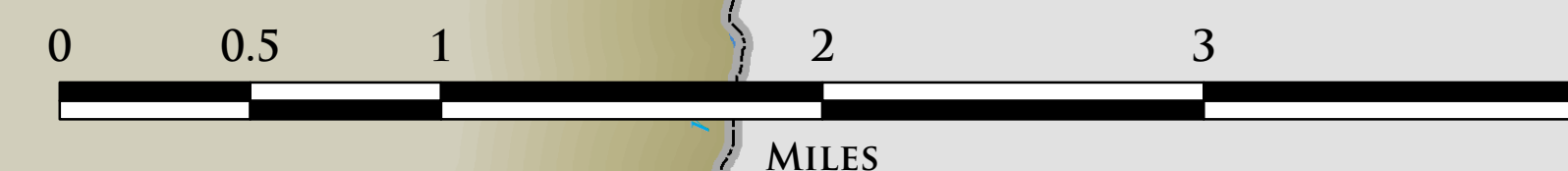


COMMISSION DISTRICT 2*

* THE NEW DISTRICT LINES IN THIS MAP WILL OFFICIALLY TAKE EFFECT ON DECEMBER 4, 2012. BUT WILL ALSO BE EFFECTIVE FOR PURPOSES OF THE QUALIFICATION AND ELECTION OF COMMISSIONERS IN 2012.



COMMISSION DISTRICTS LOCATION MAP

- Public Schools (OCPS)**
 - 9TH Grade Center
 - Elementary School
 - High School
 - Kindergarten to 8th Grade
 - Middle School
 - Head Start Centers
- Parks**
 - Orange County Parks
 - Other Parks
 - Boat Ramps
 - Trails
 - Orange County-Orlando Magic Rec. Cntr.
 - YMCA
 - Hospitals
 - Primary Care Access Network Clinics (PCAN)
 - Community Centers
 - Neighborhood Centers for Families
- Jurisdictions**
 - Apopka
 - Eatonville
 - Ocoee
 - Winter Park
- Orlando**
 - District 3
 - District 5
- Fire Stations**
 - Orange County
 - Others

Published: October 12, 2012
Orange County, Community, Environmental and Development Services Department
Fiscal & Operational Support Division
Geographic Information Systems